



*I am thrilled to be launching project “**Seeds of Hope**”, a concept that was born out of the overwhelming tragedy of the Sichuan earthquake almost three years ago. Yew Chung students responded wholeheartedly to the humanitarian needs resulting from that devastating earthquake. With the funds collected by our students from all YCIS campuses, we created **SEED**, Sichuan Earthquake Educational Development, to channel the funds to support the restoration of a school in Anyue, Sichuan Province.*

*Now Yew Chung is making a commitment to help build schools in areas of need in China, one school annually in every province where there is a YCIS school. **Seeds of Hope** is a system-wide Yew Chung charitable endeavor. All schools and students will focus on this singular charitable drive ... Fundraising goals will be set. Money earned from tickets to concerts, the sale of students’ artwork, sports competitions, bake sales, souvenir sales, etc., will be channeled to help achieve the annual goal. We will all be focused on a single project to build a single school in China.*

**Dr. Betty Chan Po-king**  
Director

## Our First “Seeds of Hope” School

A Hope School is a co-operative effort whereby a primary school is built in a rural area of China to bring education and “**Hope**” to children. The funds generated by YCIS charity driven projects will be matched by local government organizations to build a “**Seeds of Hope**” School.

After two years of effort, we have collected proceeds amounting to HK\$1.5 million. Finally, we have rebuilt a primary school, Minzhu Primary School, at Anyue, Sichuan with the help of World Vision. In the spring of 2010, a teaching block of the school, built with fund raised by Yew Chung, was completed for use. In March of that year, representatives of Yew Chung visited the school.

*“Seeds of Hope” Project*  
Anyue, Sichuan



In 2011, Shona and her husband, Michael Cartwright, visited Yew Chung International School (Hong Kong and Beijing) as Artists-in-Residence for three months. During their residency, five new editions to Shona's sculpture series, *Harvest*, each of 1.2 meter tall and in bronze, were produced for charity sales for Yew Chung's "**Seeds of Hope**" project".



*Harvest Series*  
120 x 41 x 20cm



*Inspiration:*

撫覽大地 用手觸摸大地，用心感受自然

"We touch the earth with our hands and appreciate Nature with our hearts"

*More about Shona Numan*



**Nunan**, born in 1959, studied sculpture at the Royal Melbourne Institute of Technology. She began exhibiting in 1976 in group shows, while her first one-person show was in 1987. To this day, Shona has had numerous exhibitions in major galleries in Australia, France, Thailand, Singapore, and Hong Kong. Her individuality has likened her to a number of well-known sculptors, the most famous of whom is *Giacometti* whose slim figurative work make an immediate visual connection with Nunan's.\*



*Joy*  
Museum of Art, Hamilton Regional Gallery.



*Harvest Series*

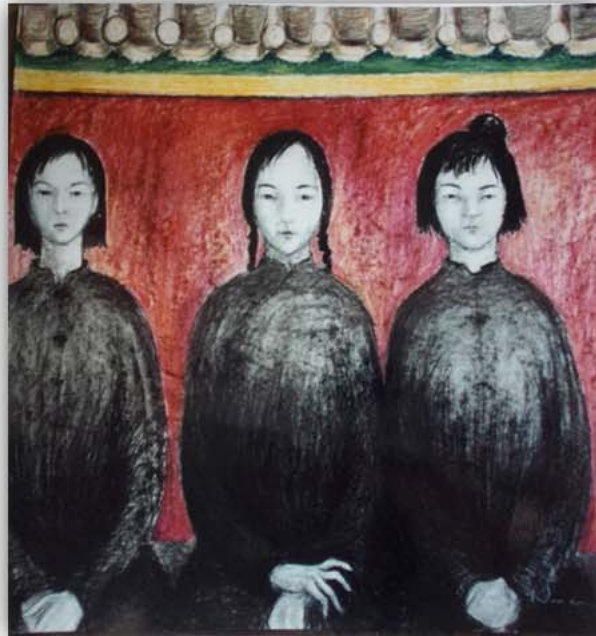


*Girl on the Hem*

Nunan's work suggests influences from many different cultures, from the primitive and the modern, from Africa and Mexico to the Middle East, from tribal and aboriginal art to ancient Etruscan, Greek and Roman forms, from Southeast Asia to China. However consciously Nunan has drawn on the varied influences one might perceive in her work, she has created a magical synthesis of line and form, of space and volume, of space and textures that cross cultural time. \*



*Warrior*



*Three Girls*



*Goddess*

That the primitive and the modern come together in Nunan's sculptures is clear. But it is not an obvious representation or a copy of another past or a culture. It is an articulate expression of Nunan the artist who seeks the common thread that crosses the cultural and aesthetic boundaries of sculpture to make a statement for today.\*



Nwando explains, "The connection in my treatment of human or animal forms is my perception of the sameness of life. Everything is just as it is with exactly the same living essence. There is no separation of life. The androgynous quality to my pieces is not intentional. My work is not about a specific male/female principle since there is no real difference between any human being". \*



*Women by the Sea*



*Seated Figure*



*Guardians*

Commissioned by BNP Paribus, HK